



Gloucester County Nature Club

Monthly Newsletter

www.gcnatureclub.org

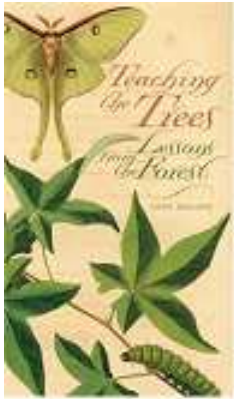
Nature Club meetings are open to the public

October 2010

**Program – Teaching The Trees: Lessons from the Forest & Getting to Old Growth
Thursday, October 14 at 7:00 PM at the Holy Nativity Lutheran Church, Wenonah,
NJ (directions below)**

Presenter: Joan Maloof

Program Coordinator: Rich Dilks 856-468-6342



“The creation of a thousand forests is in one acorn.”

~ *Ralph Waldo Emerson*

“I frequently tramped eight or ten miles through the deepest snow to keep an appointment with a Beech tree, or a Yellow Birch, or an old acquaintance among the Pines.”

~ *Henry David Thoreau*

“Why are there trees I never walk under but large and melodious thoughts descend upon me.”

~ *Walt Whitman*

“Earth, isn’t this what you want: to arise in us invisible?”

~ *Rainer Maria Rilke*

Trees are among the largest and oldest living things on Earth. A forest is not just trees, but it begins with trees, and all the other living things that make up the web of life a forest contains are there because the trees are there. This month the Gloucester County Nature Club celebrates the trees of our Eastern hardwood forests with the Mad Hatter’s Tree Party on Saturday, October 23rd and at our regular meeting on Oct. 14th with a special program by author, environmental scientist, scholar, teacher, activist and essayist Joan Maloof, who has traveled here from her home in Salisbury, Md. where she teaches biology and environmental studies at Salisbury University. Joan is the author of *Teaching The Trees: Lessons From The Forest*, which tells about how each tree species in our woods has its own unique connections to other loving things- that there are 6 species of leafhoppers that eat only Sycamore leaves, that there are midges that live in a Holly berry and prevent it from turning red (and being eaten by birds), that there are leafminers found only on Holly leaves and an endoparasitoid wasp that reproduces only in the bodies of those leafminers, or that the wildflower Beechdrops exists only where it can take nourishment from the roots of Beech trees. Joan speaks of the importance of preserving our forests, particularly those remnants of old growth forest that are still remain in the Eastern United States. Indeed, her upcoming book, *Getting To Old Growth*, tells the story of her quest to visit old growth forests in each of the 26 states east of the Mississippi River. She also speaks of the spiritual connection we have with trees, how we are awed by their beauty and grandeur, and how their existence gives joy and meaning to our own.

Ms. Maloof has also graciously consented to a book signing for *Teaching The Trees* at the conclusion of her program.

Directions: The Holy Nativity Lutheran Church is located just off Rt 553 (Woodbury-Glassboro Rd.) immediately south of the traffic light at Mantua Ave. The church parking lot can be accessed by entrances on either Woodbury-Glassboro Road or Lenape Trail (first left off of Mantua Ave).

Field Trip – Mad Hatter’s Tree Party
Saturday, October 23, 1:00 - 4:00 PM
Trip Leaders: GCNC Volunteers

Join us for The Mad Hatter’s Tree Party! This will be a fun, 45-minute educational walk in the woods of Wenonah, NJ on the Eldridge Trail. It ends with refreshments, music and the Mad Hatter himself...at a historic, open-air Tea House on the trail. Eldridge Trail (and the walk) begin at the end of Princeton Avenue where Princeton intersects Pine Street...and end on Princeton Ave where it intersects Willow Street. Street parking is available nearby. The Mad Hatter’s Tree Party will be held 1-4 PM, rain or shine. To ensure the Trail/Tea Party does not become congested, participants must pre-register and will be assigned to a walking group of 12-15 people. Everyone in that group will begin their walk at the same time. You may select, in order of preference, four possible times for you/your party to begin the walk at Eldridge Trailhead. The event registrar will try to assign you to one of your choices and will send an email confirmation of that time. It is important that you be at the Trailhead 5-10 minutes before your assigned time to receive instructions and to meet the rest of your walking group. Pre-register at the GCNC website at www.gcnc.org.



Directions: From Rt 553 (Woodbury-Glassboro Rd.), turn onto Mantua Avenue at the traffic light. Make the second left onto South Princeton Ave. Proceed 4 blocks to the intersection with Pine Street.

Field Trip Report – Wheelabrator Wildlife Refuge, September 18

Some of the birds seen on this trip were chestnut-sided, magnolia, and black-and-white warblers, ovenbird, common yellowthroat, blue-headed vireo, bald eagle, phoebe, and wild turkey, plus the usual resident goldfinch, cardinal, chickadee, house finch, and the like.



Butterflies seen included monarch, viceroy, orange sulfur, clouded sulfur, variegated fritillary, tailed blue, red admiral, spicebush swallowtail, and red-spotted purple, to name just a few. Camphorweed, and several species of goldenrods and bonesets, were in bloom. The variety of trees along this mile-long trail was noteworthy. One tree species puzzled everybody in the group, including the leaders, for a while. But fortunately trip participant Frank Eggert had a tree field guide with him, and after a bit of study the

trees were identified as Amur corktrees, a potentially invasive species that had not previously been recorded from New Jersey. The weather was perfect – not too warm, with blue skies and just a hint of autumn foliage color. There were ten participants, plus trip leaders Gale Cannon and Karl Anderson.

Family Fun Walk

Thursday, October 14 at 10:00 AM at Timber Creek Park, Gloucester Township
Trip Leader: Maria Keefe 856-627-7010 Email: maria_mk@comcast.net

Join us for a fall walk on Thursday, October 14 at 10am at Timber Creek Park, Gloucester Township. ****Note this there are two parks with the same name, see the directions**** We will walk at a toddler's pace exploring as we go. Dress in layers according to the weather. Bring your own backpack and/or a stroller that is able to be pushed on unpaved paths. All ages welcome.



Directions: Entrance to park is on Chews Landing Road, Gloucester Township. From the Deptford Mall head south on Almonesson Road toward Deptford Center Road. Turn left at Deptford Center Road. Turn left at Hurffville Rd/ Rt 41 (signs for Runnemede/Haddonfield/State Hwy 41N). Continue to follow Hurffville Road. Continue on Clements Bridge Road. Slight right at W Evesham Rd. Turn right at South Blackhorse Pike/Rt 168. Turn left at Chews Landing Road.

Conservation Corner – Top Green iPhone Apps by Deb Maka

These days almost everyone has a cell phone and many of them are smart phones. For those with an iPhone, there are several apps that can help you “go green”. According to www.metro.us, these are their top 5 picks for green apps.

1. *Air Pollution*

- This app gives real-time data for air pollution in 1,380 cities worldwide.

2. *The Green Book*

- This app gives a series of useful green tips that you can look up daily.

3. *Good Guide*

- This app has a database of about 50,000 products and states each one’s green credentials. It may help you select which product to purchase.

4. *Commute Greener*

- This app tracks down your greenhouse gas emission levels. It also gives you tips on how to reduce your carbon footprint.

5. *Seasons*

- This app lists which foods are in season so that you can make the best shopping choices to eat foods grown locally.

Reference: MetroNews Philadelphia; 2010 April 22, page 18 (www.metro.us/)

Kid's Corner - Become a Park Explorer* by Deb Maka

Kid's Corner

You don't have to travel far to have an adventure. As a family, go on a park hunt.

- Travel to another neighborhood (by car or bicycle depending on the distance).
- Find a new public park to explore
- Each park you find will be a little different. Look for things like different playground equipment, walking paths, and picnic tables.
- Keep a list of your favorite parks and come back during different seasons to see how the park changes.

* adapted from Disney Family Fun magazine (FamilyFun.com); Become a Park Explorer

Other Nature Notes

Wild Birds Unlimited offers an everyday 10% discount to GCNC members!

Wild Birds Unlimited offers an everyday 10% discount (for non bird food items) to GCNC members! *Due to the current volatile market for bird food, the 10% discount for these items has had to be discontinued.* However, members will still receive credit for their purchases towards the Frequent Seed Shopper Program. WBU offers the GCNC discount on all other items in the store. Members are requested to identify themselves as GNNC members before their sales are finalized. Questions? Please contact Sharon at 856-218-2973 or sillybird348@comcast.net.



Events by other Organizations: October 2010

- October 5 (Tuesday) – 9:00 AM to Noon. **Birds and Blooms at Amico Island Park**, Delran. Sponsored by the Burlington County Parks Department. For information or to register, phone 609-265-5858.
- October 16 (Saturday) – 10:00 AM to early afternoon. **Fall Foliage Nature Walk at Crystal Lake Park**, Mansfield Twp. Sponsored by the Burlington County Parks Department. For information or to register, phone 609-265-5858.
- October 16 (Saturday) – 2:00 PM. **Oldmans Creek Preserve – Camp Kimble Walk**. Sponsored by the South Jersey Land & Water Trust. Auburn, Salem County. For Info: phone Christine Nolan at 856-881-2269.
- October 17 (Sunday) – 9:00 AM to Noon. **Bird walk at Taylor's Preserve**, Cinnaminson. Leader: Sandra Keller. \$Fee. Sponsored by the Rancocas Nature Center. For info: phone 609-261-2495.
- October 23 (Saturday) – 10:00 AM to Mid-afternoon. **Birding at Bombay Hook**. Leader: John Courtney. \$Fee. Sponsored by the Rancocas Nature Center. For info: phone 609-261-2495.
- October 23 (Saturday) 3:00 PM. **Pedricktown Marsh**, Pedricktown, Gloucester/Salem Counties. Leader – Michael Hogan. Sponsored by the South Jersey Land & Water Trust. The Pedricktown Marsh is a large freshwater tidal marsh located on the lower portion of Oldmans Creek. This

expansive area of open wetlands contains stands of wild rice, cattails and arum and provides habitat for migratory shorebirds, waterfowl and raptors. It is also a well known endangered species location and is designated as an "Important Bird Area" by the New Jersey Audubon Society.

Directions: Take Rt. 295 south to Exit 10/Center Square Road. Make a right onto Center Square Road west, make a left onto Pedricktown Road/Rt. 601 and follow road through marsh and over the bridge. Park in grassy area on the right side of the road, just over the bridge. Look for Michael's silver pick-up truck.

The following events take place at the Scotland Run Nature Center in Clayton. For details and to register for programs, call the center at (856) 881-0845. All events are free.

- Nature Tots: Wednesday 9/15, 10/13, and 11/10 at 10:00 AM
- Bird Walks: Saturday 10/2 and 11/6 at 8:00 AM
- Afternoon Nature Strolls: Wednesday 10/20 and 11/17 at 2:30pm

Natural Events for the month of October

- Pine barrens gentian in bloom in the Pinelands.
- Goldenrods, asters, bonesets, and blazing star in bloom.
- Cranberry harvest in the Pinelands.
- Autumn colors peak in late October.
- The greatest variety of raptor migration comes in mid-October, with golden eagles, red-shouldered hawks and more.
- Fox sparrows, one of the largest sparrows, are often seen under seed feeders during their autumn migration
- Wood ducks are migrating south
- Green-winged teals, one of the smallest dabbling ducks, are passing through the area as they migrate to the shore.

Looking Ahead:

Upcoming GCNC Programs

November 11, 2010: **Swamp Pink** – Mike Hogan

December 9, 2010: **The Tatshenshini River** – Erik & Kris Mollenhauer

January 13, 2011: **The Natural & Unnatural History of Dragons** – Brian Hayes & Erik Mollenhauer

February 10, 2011: **Fungus** - John Dighton

March 10, 2011: TBD

April 14, 2011: **Wild Journeys: Migration in New Jersey** - Don Freiday

May 12, 2011: **Landscaping With Native Plants** - Alan Koch

June 9, 2011: **Annual Picnic plus "Cargo For Conservation"**. Location TBD.

2010-2011 GCNC Field Trips

Listed below are the field trips we have lined up for the next season. Changes and additions are not impossible. If you would be able and willing to lead an additional field trip, please contact Karl Anderson at karlanderson6@aol.com or 856-845-7075.

November 6 (Saturday) – **Birding at the Riverwinds Trail** – Gary Lizzi

December 18 (Saturday) – **Audubon Christmas Count** – Ron Kegel

February 19 (Saturday) – **Looking for Wintering Waterfowl at the Jersey Shore** – Bob Duke

March 12 (Saturday) – **Early Spring Birding in Mannington Twp, Salem County** – Jonathan Stillwell

April 16 (Saturday) – **Biking Along the Delaware** - Brian Hayes

May – **Bird Quest Training Sessions**

June – **To be determined.**

Club Notes:

- If you'd like to receive the newsletter electronically or receive more info about the club please email Karen Kravchuck at blackbirdsinging@hotmail.com or call 856-468-6536.
- The Nature Club is always looking for ideas for future programs and field trips. Please contact the program or trip coordinator if you have ideas or would like to help.
- Information for the next newsletter should be sent to Barry Bengel at sharkeyes@comcast.net or GCNC Newsletter, PO Box 563, Sewell, NJ 08080 by the 15th of the preceding month.
- The October Executive Committee meeting will be held on October 10th at the home of Barry Bengel. Please contact Karen Kravchuck for more information.

Reminder - Membership Dues

This time of year brings with it membership renewals. This year we will once again be keeping the price the same as last year. Please remember that your dues are the only costs associated with being a club member, we do not charge for any of our programs or field trips. Many organizations charge their members for each walk or activity they attend. We believe that the club is still an excellent value and hope the added cost will not deter any of our members. It is much cheaper for us to send the newsletter electronically to our members and as a result those members who choose to receive the newsletter electronically will receive a discount on their membership. The dues are \$15 for electronic mailings and \$20 for regular mail delivery. Please fill out the membership form at the end of this newsletter and bring it along with your dues to the October Meeting, or send your renewal form and a check payable to "Gloucester County Nature Club" to: Ed Cleary, 1874 McKee Ave., Deptford, NJ 08096.

WAIVER

Gloucester County Nature Club and/or its leaders, officers, members or representatives shall not be liable for any injuries, loss or damage to person and/or property, direct or consequential, arising out of any trips and/or activities of the Gloucester County Nature Club. The assumption of risk, which is inherent in this type of outdoor activity, is implied on the part of each person who attends any Gloucester County Nature Club trip, and every person participating in any of said trips and/or activities assumes all risk and liability in connection therewith.

Everyone participating in any activity of the Gloucester County Nature Club will be required to read the release of liability, protecting the Gloucester County Nature Club and/or its leaders, officers, members and representatives from liability.

Gloucester County Nature Club and/or its leaders, officers, members and representatives are not in any way responsible for the personal safety of the attendees. When walking along a road, keep to the left, facing oncoming traffic and walk in a single file. When walking along trails, do not follow too closely or move too fast for your safety and for the safety of others (avoid collisions and/or whipped branches). FOLLOW THE LEADER: If you forge ahead, you may find yourself alone. Responsible adults must accompany children under the age of 16. If you expect to drop out of the group early, please inform the leader. Report to one or more of the hikers if you intend to discontinue on the route.

MEMBERSHIP APPLICATION 2010-2011

New Member Renewal
 Paper Membership(\$20) - regular mail
 Electronic Membership(\$15) - newsletter via email; ***please provide email address below

Name: _____

Street: _____

City/State/ZIP: _____

Phone: _____ ***Email Address: _____

Please note any special knowledge you would be willing to share: _____

Would you be willing to serve on a committee? If so, which committee(s): _____

Are there other ways you could participate? If so, how?

Would you like to give a gift membership? If so, indicate Individual ____ or Family ____

Name: _____

Street: _____

City/State/ZIP: _____

Phone: _____

A note will be sent informing them of your gift membership in the GCNC, thank you.

I HAVE READ AND UNDERSTAND THE ABOVE WAIVER

Signature: _____ Date: _____