



# Gloucester County Nature Club Monthly Newsletter

[www.gcnatureclub.org](http://www.gcnatureclub.org)

Nature Club meetings are open to the public.

July / August 2018

## Summer Field Trips and Event

### Field Trip – Stream Walk in Ceres Park

**Date:** Tuesday, July 10, 2018

**Time:** 7:00pm to 8:30pm

**Trip Leaders -** Maria Keefe (609-315-4759) and Paula Hayes (609-221-5195); email: [pnbhayes@gmail.com](mailto:pnbhayes@gmail.com)

Join us on Tuesday, July 10th at 7:00 for our first stream walk of the summer. This park is a great one for summer hikes since its tall trees provide lots of shade. We will hike to the other end of this park and check out a new part of the stream this year. We'll explore what is in, on, under and around the creek as we walk in the water. We'll look for fish, frogs, turtles, mussels, animal prints, flowers, birds and more. Wear appropriate water shoes or old sneakers to walk IN the water, shoes that offer some protection are best (not flip flops). The walk to the stream is a bit longer than some of our past stream walks, but it's a beautiful spot. We will get wet!! You may want to bring insect repellent. All ages are welcome!

**Directions:** From Rt 322 take Lambs Rd (635) to Pitman-Barnsboro Rd (553 Alt). Turn left onto Rt 553A. Watch for Ceres Park sign on your left after crossing over Rt 55. We'll meet in the gravel parking lot.

### Event - Gloucester County Firefly Festival at Tall Pines State Preserve

**Date:** Saturday, July 21, 2018

**Time:** 8:00pm

The festival includes a number of fun, educational stations scattered along a three-quarter mile, self-guided, loop trail. We recommend people arrive between 7:45 and 8:15 pm and allow an hour to complete the walk. Bring a flashlight. NO DOGS PLEASE.

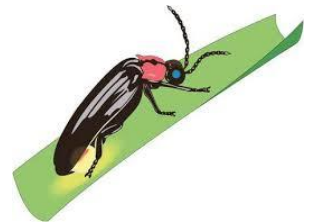
Poets, scientists and people of all ages have long been fascinated by fireflies (lightning bugs). A familiar sight in some parts of the US, fireflies are the fairies of summer nights. Viewing "nature's light show" is part of the magic of growing up in New Jersey. But there are fewer and fewer fireflies. Join us as we explore the world of fireflies... the Night Country... and how you can help fireflies be a part of our landscape for years to come.

**Registration::** Attendance is free but we request that people pre-register so we can anticipate numbers. Please email to: [Fireflyfest@gcnatureclub.org](mailto:Fireflyfest@gcnatureclub.org). Tell your name, number of people in your group, number of children.

**Rain Date:** Sunday, July 22, same time.

**Directions:** From Rt. 553 (Woodbury-Glassboro Rd) turn west onto Bark Bridge Rd. Park in the lot on the left. The loop trail begins and ends here at a Welcome Tent. Please car pool, as space for parking is limited.

Sponsored by Gloucester County Nature Club, in cooperation with: The Friends of Tall Pines Preserve, Mantua Twp Environmental Commission, Wenonah Environmental Commission, Pitman Environmental Commission, Washington Twp Environmental Commission



## **Field Trip – A Walk in the Woods at Timber Creek Park (Camden County), Glendora, NJ**

**Date: Saturday, August 11, 2018**

**Time: 10:00am to 12:00pm**

**Trip Leader - Rich Dilks**

Timber Creek County Park in Glendora, Camden County (not to be confused with Timber Creek Park in Deptford) is a woodland oasis surrounded by the densely populated communities of western Camden County. This 128 acre preserve, formerly known as Slim's Ranch, contains several miles of wide easy trails through rich open woods, a small woodland pond, bluffs with an excellent view of the North Branch of Big Timber Creek and a functioning beaver dam. Timber Creek Park is also noted for its 9 acre enclosed dog park.

We will be taking a leisurely hike along trails which are wide and well maintained, although the terrain is a little hilly in sections. We will be looking at forest plants, fungus, trees and insects. Bring binoculars to check out the bird life and be alert for other woodland wildlife as well.

The hike should last about two hours. Dress appropriately for the weather and terrain. Long pants and good walking shoes are recommended as is insect repellent and water, particularly if it is a warm day. Rest rooms and picnic tables are available at the park so feel free to pack a lunch. We will meet in the parking lot.

**Directions:** Beginning at the convergence of Clements Bridge Rd. and Rte. 41 in Deptford, take Rte. 41 east across Timber Creek. At the fork at the first traffic light, veer right on to Evesham Rd. Continue for 0.7 miles to the Black Horse Pike (Rte. 168). Turn right onto Black Horse Pike south and continue for 0.7 miles then turn left at the fork onto Chews Landing Rd. Continue on Chews Landing Rd. for 0.5 miles then turn left on to Taylor Ave., which is the park entrance and proceed to the parking lot. For GPS the park address is: 236 Taylor Ave & Chews Landing Road, Blackwood, NJ 08012.

## **Field Trip – Stream Walk in Pitman**

**Date: Tuesday, August 14, 2018**

**Time: 7:00pm to 8:30pm**

**Trip Leaders - Maria Keefe (609-315-4759) and Paula Hayes (609-221-5195); email: [pnbhayes@gmail.com](mailto:pnbhayes@gmail.com)**

Join us on Tuesday August 14th for our second stream walk of the summer. This stream walk is an old favorite, we do this one most years and it is always filled with a surprise or two. We'll explore what is in, on, under and around the creek as we walk in the water. We'll look for fish, frogs, turtles, mussels, animal prints, flowers, birds and more. Wear appropriate water shoes or old sneakers to walk IN the water; shoes that offer some protection are best (not flip-flops). WE WILL GET WET!! You may want to bring insect repellent. All ages are welcome!

**Directions:** From Lambs Road turn onto Hudson Avenue (near Total Turf Experience). Proceed about 1/4 mile, then turn right onto Albert Avenue. Turn into Pitman Memorial School parking lot on the left.

## **Field Trip – Butterfly Walk – Details to be Determined**

**August Date TBD**

**Trip Leader: Chris Herz**



In cooperation with Chris Herz and the Audubon Wildlife Society we will be offering a walk focused on butterflies and their identification. The location and date for this trip were not finalized as of our publication date. Please check back on our MeetUp site or watch for an email blast later in July with the details. This is always an interesting trip with a great leader, we hope you'll join us in learning more about these winged jewels.

### **Natural Events for the month of July**

- Blueberries ripen in early July.
- Bog asphodel, now found only in New Jersey, blooms in early July in Pinelands fens.
- The first brood of monarch butterflies is emerging from their chrysalis.
- Raccoons, skunks, and opossums are digging up and eating turtle eggs.
- Breeding and nesting season for birds ends this month except for goldfinches and late bluebirds
- Thistle plants are beginning to seed; goldfinches gather thistledown for nesting materials
- Listen for the feeding calls of young barred and great horned owls.
- Yellow warblers begin to head south in July; migration is complete in August

### **Natural Events for the month of August**

- Perseid meteor shower – peaks on August 13 this year..
- Sweet goldenrod, early goldenrod, cardinal flower, and other late-summer flowers bloom.
- Sweet pepperbush in bloom.
- Purple martins begin roosting in phragmites along the Maurice River near Port Elizabeth in preparation for their southern migration. Peak numbers usually occur around the third week in August.
- Red knots pass through New Jersey again on their southward migration to Chile. Adults are still in breeding plumage.
- Fall raptor migration begins in mid-August with small numbers of several species, including American kestrels, ospreys and bald eagles.
- Gray squirrels give birth to second brood.
- Early warblers migrating south through New Jersey.
- American goldfinches finish nesting late in this month
- Second brood of hummingbirds begin to appear at feeders.
- Birds are feeding on fruits of flowering dogwood trees.

### **Club Notes:**

- If you'd like to receive the newsletter electronically or receive more info about the club please email Karen Kravchuck at [blackbirdssinging@hotmail.com](mailto:blackbirdssinging@hotmail.com) or call 609-617-6693 (cell).
- The Nature Club is always looking for ideas for future programs and field trips. Please contact the program or trip coordinator if you have ideas or would like to help.
- Information for the next newsletter should be sent to Barry Bengel at [sharkeyes@comcast.net](mailto:sharkeyes@comcast.net) or GCNC Newsletter, PO Box 563, Sewell, NJ 08080 by the 15<sup>th</sup> of the preceding month.