



Gloucester County Nature Club

Monthly Newsletter

www.gcnatureclub.org

Nature Club meetings are open to the public

May 2011

Program – Reconnecting The Web: Native Plants in Gardens and Landscaping & 2011 Annual Plant Sale

Thursday, May 12 at 6:00 PM at Holy Nativity Lutheran Church, Wenonah NJ

Presenter: Alan Koch, Senior Landscape Architect for Gloucester County Parks and Recreation

Program Coordinator: Rich Dilks 856-468-6342

Reminder: Starting time for the plant sale is 6:00 PM, for the program 7:00 PM.



"Study nature, love nature, stay close to nature. It will never fail you."

- Frank Lloyd Wright

"A weed is no more than a flower in disguise."

- James Russell Lowell

"Nature, to be commanded, must be obeyed."

- Francis Bacon, Novum Organum, 1620

Every plant is a native plant- somewhere. Even the countless hybrids and varieties developed by human efforts are direct descendants of species found in nature. The quality that distinguishes a native plant from an exotic as a desirable choice for our gardens and landscaped spaces is its connectedness to its environment. In its beauty and majesty, a Spring Beauty, a Large-flowered Trillium, a Spicebush, Flowering Dogwood, Northern Red Oak or American Sycamore matches any plant whose origin is in Europe or Asia. By choosing natives, we recognize the value of and help conserve our regions rich botanical heritage. Moreover, the natives are adapted to local conditions of climate, rainfall, soil and temperature and do not require frequent watering, pesticides and chemical fertilizers to thrive. Most importantly, native plants are part of an ecosystem of interdependent life - the web of life- that connect plants to the survival of fungi, insects, birds and mammals, in short, to just about everything else.

In May 2009 the GCNC's speaker was Professor Douglas Tallamy, whose in his book, Bringing Nature Home, stated so clearly the importance of bringing back native plants into our gardening and landscaping to restore and preserve that web of life. In May 2011 we are very pleased to welcome as our speaker Mr. Alan Koch, Senior Landscape Architect for Gloucester County Parks and Recreation. Alan Koch is not only an advocate of Dr. Tallamy's principles, but as a practicing landscape architect has had the opportunity to put those principles into practice in the public spaces of Gloucester County. Tonight, Alan will share creative ways to make your garden 'greener' by using native plants and will emphasize the importance of restoring native plants into the environment to conserve water, decrease insecticides and establish wildlife habitats. An avid gardener himself, Alan has prepared a slide show of his own garden and will offer tips and advise for how we all can create beautiful, environmentally friendly gardens and outdoor spaces, and how we all can be a part of reconnecting the web of life around us.

Directions: The Holy Nativity Lutheran Church is located just off Rt 553 (Woodbury-Glassboro Rd.) immediately south of the traffic light at Mantua Ave. The church parking lot can be accessed by entrances on either Woodbury-Glassboro Road or Lenape Trail (first left off of Mantua Ave).

ANNUAL PLANT SALE! It's that time again! Spring is here and it's time to be in our gardens, getting them ready for the warm weather season. This means it is also time for the Club's annual plant sale. Hopefully, once again, we'll have a wonderful combination of nursery grown plants and plants from our very own gardens.

Here's where your part of this comes in. As you are in your gardens in the next couple of weeks keep an eye out for plants you can share. Maybe it could be some of those perennials you have been meaning to divide or a volunteer shrub or tree that just has to be moved. Even some extra seeds that you collected in the fall would be great. Just pot them up or pack them up and bring them with you. Please mark them carefully, though, so we keep the mystery plants to a minimum.



The Plant Sale will be held just before the May meeting. It will start at 6:00 PM at the Holy Nativity Lutheran Church. It is open to the public so please tell family and friends.

Field Trip: 2011 Gloucester County Bird Quest **Saturday May 7, 2011**

The Gloucester County Nature Club and co-sponsors invite people of all ages to participate in the **2011 (12th annual) Gloucester County Bird Quest. The 2011 Bird Quest** will take place on **Sat., May 7, 2011 from 7 AM to 12 noon throughout Gloucester County.**

***We will meet at our new location: Washington Lake (the swimming lake accessed off of Chapel Heights Road near the community church). Washington Lake is located at 353 Chapel Heights Rd; Sewell, NJ 08080.**

During this time, teams visit parks and natural sites in Gloucester County to find as many different bird species as they can. The Quest is:

- A way to discover Gloucester County's parks and natural areas
- A way to discover the unique birds that live in and through our county
- An opportunity to learn how to identify birds by sight, sound, behavior, and habitat
- An opportunity to have fun with family, friends, and colleagues
- A light-hearted competition

The Quest is an educational event: novices are encouraged to participate.

How it works: Teams have 5 hours on Saturday (7AM to noon) to visit sites in Gloucester County. Birds are identified by sight or sound. The goal is to find as many different species of birds as possible. At noon, all participants gather at **Washington Lake (the swimming lake accessed off of Chapel Heights Road near the community church)** to report results and for **(free) lunch, t-shirts, and prizes.**

We have three ways you can participate:

- Organize your own Quest team with colleagues, friends, and/or family and visit parks and natural areas as a team to find your bird species.
- Join a bus - with support from Wheelabrator, LP of Gloucester County, the club will again operate expert guided buses for individuals unable to form their own teams and are willing to join a larger group.

- Walk with our expert guides at locations around Gloucester County for those folks who are looking for a smaller group size but are not able to form a team.
 - **7:00-8:30: Maple Ridge:** From the intersection of Rt 553 (Woodbury-Glassboro Rd) and Mantua Ave in Wenonah (and Holy Nativity Lutheran Church), travel .75 mile south on Rt 553 to the intersection with Bark Bridge Rd. Turn right onto Bark Bridge Rd, and park alongside the road. Meet in the closed-off parking lot.
 - **9:00-10:30: Field of Dreams:** From Interstate 295, Exit 21, take Crown Pint Road (Rt 44) West. In about .25 miles, take a right onto River Road. Park in the parking lot, and meet in the back corner of the lot. The parking lot is off of Crown Point Road and there is a Field of Dreams sign on Crown Point Road.
 - **11:00-12:00: Washington Lake** (also the picnic location): Take Rt 47 south to East Holly Ave (about .5 mile south of Atkinson (Bethel Mill) Park. Make a left onto E Holly Ave, then take the first right onto Oak Avenue. Take the 3rd left onto Chapel Heights Rd/County Rd 639. Go .5 mile; entrance will be on the left. Meet at the pavilion.

Last year's Gloucester County Bird Quest attracted hundreds of participants made up of families, friends, teachers, school groups, scout troops, environmental commissions ... residents of Gloucester and neighboring counties. **If you have participated in the past why not invite a friend or colleagues to join you for this year's Bird Quest!**

Our theme this year is "Saving Natural Places of Gloucester County – Maple Ridge" and will be featured in a T-shirt designed by Gariel Graphics. **The \$12 fee per participant helps to defray the cost of lunch, T-shirts, prizes etc.**

More information and registration forms will be posted to the Gloucester County Nature Club's website at www.gcnatureclub.org. For more information, to receive a registration form, join a team or reserve a seat on the bus, contact Brian Hayes at bhayes@eirc.org or 856.582.7000 x110.

Participants are encouraged to attend any of a series of free field trainings in the evenings, mornings and weekends before the Quest.

Remaining training sessions are:

May 1 (Sunday), 7:00-8:30 AM Bird Quest Training

Railroad Avenue, Elk Twp.

Directions: From Rt. 322 in Richwood turn at light onto Aura Rd. (Rt. 667.) Continue 3.5 mi. and turn Right onto Whig Lane Rd.(Rt. 619.) At fork stay Left . Pass Aura Elementary School and turn left into the Elk Township Recreational Complex. Park in the paved lot.

Leader: Ron Kegel Co-Leader: Loretta Dunne

May 4 (Wednesday), 6:00 – 7:00 AM Birding by Ear

Red Bank Battlefield Park, National Park

Directions: From Interstate 295 Exit 22, take Red Bank Avenue west for about 0.5 mile to Hessian Avenue. Turn left on Hessian Avenue, and continue for 1.2 miles to the park. Meet at the parking area on the left.

Leader: Gale Cannon Co-Leader Karl Anderson

Kid's Corner - Good Bugs * by Deb Maka

Some “bugs” are bothersome and considered pests, but there are some are helpful to the environment. Set off on a quest for the best kinds of bugs and see who you meet. Then invite some to live in your yard.

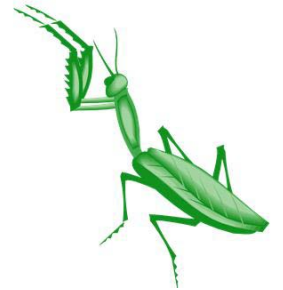
Here are some examples of good “bugs”:



- Access to the outdoors
- Predator insects, such as lacewings, ladybugs, praying mantises, and ground beetles, eat the “bad bugs”
- Bees, butterflies, and moths are pollinators and are important for flowers and other plants

How can you make your yard a cozier place for good bugs to visit?

1. Skip the pesticides
 - Pesticides kill the good guys along with the pests
2. Plant flowers that provide food for helpful insects
 - Herbs such as dill, cilantro, fennel, and parsley
 - Flowers such as sweet alyssum, yarrow, lavender, cosmos, zinnias, and sunflowers
3. Plant flowers that provide food for helpful insects
 - Aim for variety
 - Choose lots of different kinds of flowers
4. Provide shelter for good bugs
 - Trees, shrubs, ground covers, and grasses make safe places to rest.
 - Mulch and stepping stones are nice to hide under.
5. Add water
 - Place some rocks in a saucer and keep it filled with fresh water during dry spells.



* adapted from the National Wildlife Federation website (<http://www.nwf.org/Get-Outside/Be-Out-There/Activities/Observe-and-Explore/Got-Good-Bugs.aspx>)

Other Nature Notes

Events by other Organizations: May 2011

- Saturday mornings, 7:30 AM to about 9:00, **Bird Walks**. Joe Esterly is doing bird walks at Scotland Run Park, weather permitting. Walks meet at the nature center parking lot. For information phone Joe at 856-629-7626, or e-mail jde9773@aol.com.
- May 7 (Saturday) – **Spring Migrants at Maria Barnaby Greenwald Park**, Cherry Hill. Leader: Chris Herz. Sponsored by the Audubon Wildlife Society. For info: www.audubonwildlifesociety.org/
- May 7 (Saturday), 10:00 AM – Mid-afternoon. **Spring Wildflowers at Sourland Mountain**, Somerset County. Leaders: David Austin and Sam Saulys. Sponsored by the Torrey Botanical Society. For info: www.torreybotanical.org/.

- May 7 (Saturday) – 9:00 AM – Mid-afternoon. **Wildflowers at Bowman’s Hill Wildflower Preserve.** Leader: Karl Anderson. \$Fee. Sponsored by the Rancocas Nature Center. For info: contact leader karlanderson6@aol.com or 856-845-7075.
- May 7 (Saturday) – 11:00 AM-1:00 PM. **Atco Lake Bio-Blitz.** Please join the South Jersey Land and Water Trust and the Waterford Township Environmental Commission for a “Bio Blitz” to identify the many kinds of plants and animals found along the Atco Lake. SJLWT Staff Member Michael Hogan will perform a macro invertebrate assessment. Meet at the beach along Shore Line Drive. To RSVP and for directions, please contact Mike at 609-476-2086 or hoganphoto@verizon.net or see www.sjlandwater.org/.
- May 15 (Sunday), 2:00 PM – **Walk in the Wild.** Sponsored by the Old Pine Farm Natural Lands Trust. Free. Experience a casual stroll on the trails of the land trust with a knowledgeable leader to observe the plants, animals, natural features and processes, and just plain magic that make this place very special. Meet in the parking area at the end of Rankin Avenue in Blackwood Terrace. For More Information call Carl Ford at 856-579-4441. We will do this on the third Sunday of each month, with a different focus each month.
- May 21 (Saturday), 10:00 AM – Mid-afternoon. **Grasses and Sedges at Burden Hill Forest,** Salem County. Leaders: Ted Gordon and Joe Arsenault. Sponsored by the Philadelphia Botanical Club. For info: http://www.ansp.org/hosted/botany_club/
- May 21 (Saturday), 8:00 AM – All day. **Burlington County Birding Bonanza.** Meets at Smithville County Park. Leader: Jen Bulava. Sponsored by the Burlington County Park Commission. Free, but registration is required; phone 609-265-5858.
- May 26 (Thursday), 7:00 PM. **Birding and Wildlife Photography in the Pine Barrens.** Join South Jersey Land and Water Trust staff member Michael Hogan for a nature photography program. Meet at REI Marlton 501 Rt. 73 S. Marlton, NJ 08053. For more information, please contact Mike at 609-476-2086 or hoganphoto@verizon.net or see www.sjlandwater.org/.
- May 28 (Saturday), 11:00 AM. **Walk in the Woods.** Please join South Jersey Land and Water Trust staff member Michael Hogan for a two hour guided tour of the NJDEP Department of Defense (DOD) Ponds Wildlife Management Area in Penns Grove. Trail system leads to a great view of the Delaware River. Free SJLWT members, \$3 nonmembers. Meet on the dirt entrance road off Rt. 130. To RSVP and for directions, please contact Mike at 609-476-2086 or hoganphoto@verizon.net or see www.sjlandwater.org/.

The following events take place at the Scotland Run Nature Center in Clayton. For details and to register for programs, call the center at (856) 881-0845. All events are free.

- Tuesday 5/10 at 6:00 PM
- Nature Tots: Wednesday 5/11 at 10:00 AM
- Afternoon Nature Stroll: Wednesday 5/25 at 2:30 PM
- “Fresh Air” After School Program: Every Thursday starting 3/3 from 4:00 PM to 5:30 PM (except 5/12 and 5/19)
- Performers in the Park: Every Tuesday starting 3/15 from 3:00 PM to 4:00 PM (except 4/26 and 5/31)
- Scout Saturday: Saturday and 5/21 at 10:00 AM
- Frog Song Night Walk: Thursday 5/19 at 7:00 PM

Natural Events for the month of May

- Jack in the pulpit, pink lady's-slipper, and mayapple bloom by mid-May in the County's remnant woodlands.
- Early spring flowers such as spring beauty fade rapidly, as trees leaf out and shade the forest floor.
- Princess tree, or Paulownia (named after an 18th-Century Russian princess) blooms with large clusters of pale purple flowers. It's an invasive species but still very pretty.
- By late May, monarch butterflies arrive from the south and begin laying their eggs on newly emerged plants of common milkweed.
- Young rabbits, gray squirrels, and other small mammals are leaving their home nests. Drive carefully.
- Horseshoe crabs spawn on Delaware Bayshore beaches from late May to early June.
- Red knots arrive for their stop-over at the Delaware Bay area to double their weight on horseshoe crab eggs in preparation for their nonstop journey to Arctic breeding grounds.

Looking Ahead:

Upcoming GCNC Program

June 9, 2011: **Annual Picnic plus "Cargo For Conservation"** Location: Wenonah Lake

2010-2011 GCNC Field Trip

Listed below is the remaining regular field trip of the season.

June 18 (Saturday) – **Kayaking and Birding at Scotland Run Park** - Jay Hoffecker

A few summer field trips will be announced in the next newsletter. If you would be able and willing to lead a summer field trip, please contact Karl Anderson at karlanderson6@aol.com or phone 856-845-7075.

Wild Birds Unlimited offers an everyday 10% discount to GCNC members.

Wild Birds Unlimited offers an everyday 10% discount (for non bird food items) to GCNC members! *Due to the current volatile market for bird food, the 10% discount for these items has had to be discontinued.* However, members will still receive credit for their purchases towards the Frequent Seed Shopper Program. WBU offers the GCNC discount on all other items in the store. Members are requested to identify themselves as GNNC members before their sales are finalized. Questions? Please contact Sharon at 856-218-2973 or sillybird348@comcast.net.



Club Notes:

- If you'd like to receive the newsletter electronically or receive more info about the club please email Karen Kravchuck at blackbirdsinging@hotmail.com or call 856-468-6536.
- The Nature Club is always looking for ideas for future programs and field trips. Please contact the program or trip coordinator if you have ideas or would like to help.

- Information for the next newsletter should be sent to Barry Bengel at sharkeyes@comcast.net or GCNC Newsletter, PO Box 563, Sewell, NJ 08080 by the 15th of the preceding month.
- The May Executive Committee meeting will be held on May 8 at the home of Karl Anderson. Please contact Karen Kravchuck for more information.

Election of Trustees - The May Nature Club meeting is when we annually hold elections for our Board of Trustees. The Trustees hold the ultimate governing power of the Club. The Trustees elect the members of the Executive Committee (president, vice-president, secretary, treasurer, and chairpersons of the standing committees). The Trustees' other primary responsibility is to provide direction to the Executive Committee because our by-laws specify that the Board of Trustees authorizes power to the Executive Committee for the day-to-day operations of the Club.

Trustees meet annually at a joint meeting with the Executive Committee in June. There are a total of 12 members of the Board of Trustees. Elected Trustees agree to serve a 3 year term and one third of the Trustees are elected by the Club's membership at the May meeting. The current Trustees are as follows:

2008 – 2011 term: Erik Mollenhauer, Bonnie Dann, Jackie Partridge, vacancy

2009 – 2012 term: Brian Hayes, Karen Kravchuck, Kris Mollenhauer, Carol Cassel

2010 – 2013 term: Barry Bengel, Elaine Dzeima, Paula Hayes, Dave Partridge

We will be electing Trustees for the term of 2011-2014. If you are interested in running for election, please contact Karen Kravchuck at 856-468-6536 or at blackbirdsinging@hotmail.com.

Gloucester County Nature Club 2011 Official Ballot

Board of Trustees (Term for 2011 – 2014)

Mark an X in the box to the left of the candidates of your choice.

(Please vote for no more than four (4) candidates)

Bonnie Dann

Jackie Partridge

Erik Mollenhauer

Jayne Rhynard

Bird Quest Registration - May 7, 2011

Be sure to include your name, address, phone # and T-shirt size on the form. Mail the form with a check (\$12 per person) payable to *Gloucester County Nature Club* to: GC Nature Club, P.O. Box 563, Sewell, NJ 08080. Questions? Contact Brian Hayes at (856) 582-7000 x110 daytime, (856) 468-9272 evenings and weekends or pnbhayes@comcast.net. Entries must be received by April 29, for t-shirts to be guaranteed on day of event.

Name of Team (ex: Heritage Hummingbirds) _____

Name of Team Leader (contact person) _____ T-shirt size _____

Leader's mailing address _____

Leader's phone number _____ Leaders email _____

Person #2 (name) _____ T-shirt size _____

Person #3 _____ T-shirt size _____

Person #4 _____ T-shirt size _____

Person #5 _____ T-shirt size _____

Our team will be participating on the: Walks _____ or Bus _____ or as a Team _____
Attach extra sheet with additional names and T-shirt sizes.

Bus Space is limited: first come first served. You must reserve a seat in advance. Bus leaves at 7 am from Washington Lake (the swimming lake accessed from Chapel Heights Road).

Fill in here for additional items: Additional T-shirts: Qty _____ (\$12.95 each)

Birds of Gloucester County Flash Cards _____ (\$6.00/set)

Natural Places of Gloucester Co. NJ book _____ (\$12.00 each)